



YUCCA MOUNTAIN MONITOR

COUNTY of INYO

YUCCA MOUNTAIN REPOSITORY ASSESSMENT OFFICE UPDATE

Volume 1, Issue II

APRIL 2007

Inside this issue:

<i>Yucca Update</i>	1
<i>Hydrology Update</i>	1
<i>Transportation</i>	2
<i>GNEP</i>	3
<i>GIS News</i>	3
<i>License Support Network</i>	3
<i>Public Outreach</i>	4

On February 26, 2007, Inyo County Board of Supervisors took part in a workshop presented by the Yucca Mountain Repository Assessment Office. The Hydrodynamics Group went over the program from the beginning of their participation to date (Mike King) and gave a presentation on hydrology flow as it relates to Yucca Mountain and the Southeast County (Dr. John Bredehoeft). Black Mountain Research, Dr. Fred Dilger, presented an overview of transportation issues relating to Southeast County and spent fuel transportation. Latir Energy Consultants, John Gervers, brought us up to date with legislative issues. County goals and policy issues were also discussed.

Ward Sproat, director of the Office of Civilian Radioactive Waste Management, maintains that DOE/OCRWM will submit a license application for Yucca Mountain to the National Regulatory Commission no on or before June 30, 2008.

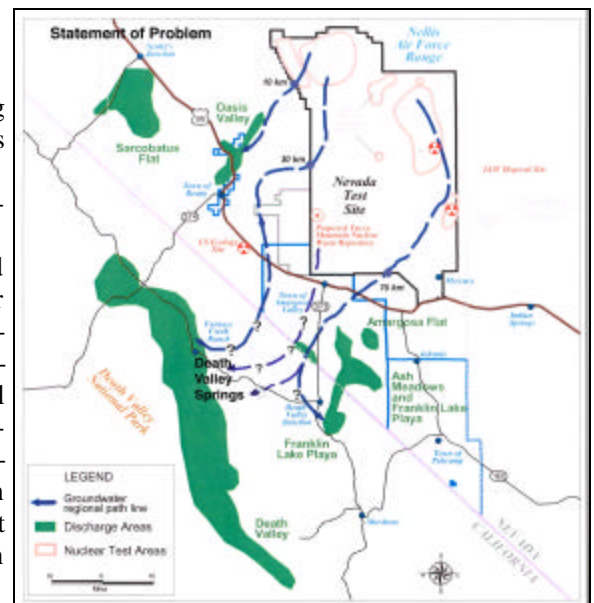
Inyo County goes to Washington D.C.

A delegation from Inyo County will be traveling to Washington D.C. in May to meet with federal lawmakers, representatives from the U.S. Department of Energy (DOE), the U.S. Nuclear Regulatory Commission (NRC), and the U.S. Nuclear Waste Technical Review Board (TRB). The County delegation will include Supervisor Jim Bilyeu, Supervisor Richard Cervantes, Latir Energy Consultants, The Hydrodynamics Group, and staff from Inyo County's Yucca Mountain Repository Assessment Office (RAO).

The delegation will meet with the NRC and Lawrence Kokajko, Office of Nuclear Safety and Safeguards. Mr. Kokajko is one of the primary people at the NRC who will be analyzing the DOE's licensing application (LA) to the NRC. The NRC reviews every aspect of the Yucca Mountain Project (YMP), which includes evaluating the scientific work and system performance. The formal NRC licensing process will involve external experts in the technical review that will occur when the NRC considers issuing licenses to construct and operate a repository. Once the LA has been submitted, Inyo County will be prohibited from contacting the NRC, as it will be considered an "ex parte" communication. The County is very interested to see how the NRC views threats to groundwater resources in Inyo County from the YMP, and how it will influence the NRC's review of the LA. Any materials generated from this meeting will be submitted to the License Support Network, a website that houses all the documents which participants will rely on as evidence during the licensing proceedings between the NRC and the DOE.

HYDROLOGY UPDATE

The drilling rigs arrived on site on February 1, 2007. A kick-off meeting was held at the BLM #1 site on February 2, 2007. Two research wells were completed in the Amargosa Valley during the past drilling cycle. BLM #1, a 2450-foot well, is the first ever well drilled into the Lower Carbonate Aquifer (LCA) in California. BLM #1A, a 630-foot well, was drilled into the Volcanic Tertiary Aquifer, which is part of the Saturated Zone at Yucca Mountain. The Saturated Zone will be the first groundwater resource to be impacted by leaking or failed waste packages from the repository. Currently, the Yucca Mountain RAO is writing Request For Proposals for pump tests on BLM #1 and BLM #1A to assess the geochemical and geophysical properties of these wells. Further analysis will be conducted on the level of connectivity between the LCA and the Volcanic Tertiary Aquifer. BLM #2, another deep research well, was drilled to a depth of 3309 feet. However, the LCA was not penetrated during the most recent drilling operations. It is thought that the LCA will be encountered within 100-200 more feet. (Continued on Page 2)



TRANSPORTATION

Rail is still the preferred mode of transportation for DOE. The possible rail routes present a varied amount of possible impacts.

Gary Lanthrum, director of the project's Office of Logistics Management, told the Nuclear Waste Technical Review Board at its January 24, 2007 meeting in Las Vegas, "It really doesn't make much difference nationally on the number of shipments a state will see". However, there are many who disagree. Bob Halstead, transportation consultant for Nevada's Nuclear Projects Agency said the "absolute minimum impact" of the Mina route would double the rail shipments of deadly, metal-encased spent nuclear fuel assemblies that would go through California.

Double means 10 percent of the nation's overall nuclear waste shipments. As many as half of the rail shipments planned for delivery nationwide to Yucca Mountain could pass through California under a maximum-impact scenario, Halstead said.

Experts continue to express concern for increased trucking of spent nuclear fuel and its transportation on our nation's highways. Rural areas are concerned with emergency response needs. Even if the DOE commits to a rail shipping campaign, it still concedes that truck shipments will be necessary for utility sites that lack rail access, and for initial shipments going to Yucca Mountain before completion of a rail spur to the site. But the DOE has still not released final criteria for routing designations, and refused to release any funds under Section 180

(c) of the Nuclear Waste Policy Act until three to five years before the first shipments to the repository. Section 180 (c) mandates that the DOE appropriate funds for the training of first responders and other safety personnel in relation to shipments of nuclear waste to Yucca Mountain.

If the DOE selects California Highway 127 as a truck-shipping route to Yucca Mountain, the State of California, through the Governor's Office and the California Highway Patrol, would have to give the final approval to the DOE that Highway 127 can be used for shipping purposes. Studies conducted by the California Department of Transportation, as well as the Inyo County Yucca Mountain RAO, have found that California Highway 127 is wholly inadequate to ship nuclear waste according to the DOE's latest shipping projections.

HYDROLOGY UPDATE (Continued)

After June 9, 2007, the County expects to be awarded \$1.6 million dollars to complete drilling between 2007-2008 in the second year of our Cooperative Agreement with the DOE for hydrology studies. The Yucca Mountain RAO's tentative plan, subject to funding and drill rig availability, is to drill the Echo Canyon research well in Death Valley National Park and to finish BLM #2 in September 2007-January 2008. This will exhaust funding for the second year of our Cooperative Agreement. Echo Canyon will be a 3000-foot deep well in the Southern Funeral Mountains, and the data from Echo will help us assess how groundwater migrates west from the Amargosa Valley through the Furnace Creek Fault to discharge points in the vicinity of Furnace Creek. If Echo Canyon runs over on cost, we will complete Nevares Spring research well rather than BLM #2 because Nevares will be far less expensive than BLM #2. Nevares will be a 200-foot well, but will be very important in the overall scheme of the County's drilling program, as it supplies all of the Furnace Creek area with drinking water. BLM #2 and BLM #3 will then be completed in the last year of the Cooperative Agreement, starting June 9, 2008 and ending June 8, 2009, as well as any shallow wells in Furnace Creek if the County has excess funding.





GNEP

(Global Nuclear Energy
Partnership)

The U.S. Department of Energy (DOE) announced that over \$10 million will be used for 11 commercial and public consortia selected to conduct detailed siting studies for integrated spent fuel recycling facilities under President Bush's Global Nuclear Energy Partnership (GNEP).

Award recipients, announced in November 2006, will carry out siting studies to determine the possibility of hosting an advanced nuclear fuel recycling center and/or an advanced recycling reactor. Recipients will conduct detailed site characterization studies of the sites which were proposed in their Funding Opportunity Announcement (FOA) responses. Recipients will have 90-days to complete these studies and submit a Site Characterization Report to DOE on May 30, 2007.

Note: With reprocessing, radioactive waste may be traveling several times. With the Yucca Mountain storage proposal, the waste would be on highways only once. Reprocessing may also reduce the total volume of waste destined for disposal at Yucca Mountain.

GIS Please visit our Website and use our
GIS mapping software

License Application and Support Network

License Application

The Department of Energy is currently preparing a license application for submittal to the Nuclear Regulatory Commission.

The license application will be accompanied by *DOE's Final Environmental Impact Statement for a Geological Repository for the Disposal of Spent Nuclear Fuel and High-Level Radioactive Waste at Yucca Mountain, Nye County, Nevada*, in support of receiving construction authorization and, ultimately, a license to receive and possess waste.

The NRC is the licensing and regulatory agency that will make the final decision on whether the DOE is allowed to proceed with construction and subsequent licensing to operate the repository.

In July of 2006, the Department announced plans to submit a license application to the Nuclear Regulatory Commission by June 30, 2008, and to initiate repository operations in 2017. This opening date of 2017 is a "best-achievable schedule" and is predicated upon enactment of new legislation.

License Support Network (LSN)

Inyo County has submitted numerous document to the LSN. All documents submitted are available on the Yucca Mountain Web Site.

New Target Dates for Yucca Mountain

Design for License Application Complete.....	30 November 2007
Licensing Support Network Certification.....	21 December 2007
Supplemental Environmental Impact Statement (EIS) Issued.....	30 May 2008
Final Rail Alignment EIS Issued.....	30 June 2008
License Application Submittal.....	30 June 2008
License Application Docketed by NRC.....	30 September 2008
Start Nevada Rail Construction.....	5 October 2009
NRC Authorizes Construction.....	30 September 2011
Receive and Possess License Application Submittal to NRC.....	29 March 2013
Rail Access In-Service.....	30 June 2014
Construction Complete for Initial Operations	30 March 2016
Start up and Pre-Op Testing Complete	31 December 2016
Begin Receipt of Waste.....	31 March 2017

PUBLIC OUTREACH

Inyo County Yucca Mountain Repository Assessment Office is currently located upstairs within the Inyo County Water Department, 163 May Street, Bishop, CA 93514.

Inyo County Yucca Mountain Repository Assessment Office staff are available for questions or comments by phone or email. We will make every effort to furnish information upon request.

Nearest Information Center is located at 2341 Postal Drive, Pahrump, NV 89048 .



Inyo County Repository Assessment Office regularly updates the Yucca Mountain **WEB PAGE**. You may visit us at:

www.inyoyucca.org

Please visit often and contact our office with any questions or suggestions.

COUNTY of INYO

Yucca Mountain Repository Assessment Office

163 May Street
Bishop, CA 93514
inyoyucca@qnet.com

Matt Gaffney, Project Associate
Phone: 760-873-7423
Email: mgaffney@qnet.com
Rennie Holland, Project Analyst
Phone: 760-873-7356
Email: rholland@qnet.com
Fax: 760-873-7437