

Job No. 11623
Company LANG EXPLORATORY DRILLING
Well INYO-BLM #1
Field CLAY ROAD
County INYO State CA

Location: CLAY ROAD, WEST OF HWY 127
Other Services: CALIPER SONIC/VDL DEVIATION
Sec. Twp. Rge. Elevation above perm. datum
Permanent Datum G.L. 0
Log Measured from G.L. 0
Drilling Measured from G.L. 0
Date 10/18/2004
Run Number ONE
Depth Outlier 2125
Depth Logger 2113
Bottom Logged Interval 2113

Casing Driller 12.25" @ 49'
Casing Logger 49'
Bit Size 8.75"
Type Fluid in Hole WATER
Density / Viscosity N/A
PH / Fluid Loss N/A
Source of Sample PIT
Rim @ Meas. Temp 11.4 @ 77F
Rim @ Meas. Temp 89.009 @ 77F
Rim @ Meas. Temp 12.3 @ 77F
Source of Rm / Rmc MEAS
Rm @ BHT N/A
Time Circulation Stopped 8 HRS
Time Logger on Bottom 18.10
Max. Recorded Temperature N/A
Equipment Number PS-1
Location L.A.
Recorded By T. HOWARD
Witnessed By MIKE KING

<<< Fold Here >>>

All interpretations are opinions based on inferences from electrical or other measurements and we cannot and do not guarantee the accuracy or correctness of any interpretation, and we shall not, except in the case of gross or willful negligence on our part, be liable or responsible for any loss, costs, damages, or expenses incurred or sustained by anyone resulting from any interpretation made by any of our officers, agents or employees. These interpretations are also subject to our general terms and conditions set out in our current Price Schedule.

Comments

MUD INFO PROVIDED BY LANG

ELOG Calibration Report

Serial: D1
Model: DTQ
Shop Calibration Performed: Sun Oct 03 15:58:27 2004
Before Survey Verification Performed: Fri Mar 28 18:39:54 2003
After Survey Verification Performed: Tue Nov 20 13:45:24 2001

Shop Calibration

	Readings			References			Results	
	Zero	Cal		Zero	Cal		Gain	Offset
Short	8.338	99.830		10.200	102.200	Ohm-m	1.006	1.815
Long	4.448	94.107		10.200	102.200	Ohm-m	1.026	-21.000
IEE	133.593	6285.944	counts	0.146	6.879	A		
VSN	89.009	7086.491	counts	1.698	135.166	V		
VLN	130.741	1836.815	counts	2.494	35.035	V		

Before Survey Verification

	Readings			References			Results	
	Zero	Cal		Zero	Cal		Gain	Offset
Short	255.170	100.412		46.444	100.411	Ohm-m	-0.349	135.426
Long	1150.040	103.869		103.264	103.264	Ohm-m	0.219	80.559
IEE	140.620	6475.111	counts	0.154	7.086	A		
VSN	403.139	7304.796	counts	7.689	139.330	V		
VLN	454.231	1889.074	counts	8.664	36.032	V		

After Survey Verification

	Readings			References			Results	
	Zero	Cal		Zero	Cal		Gain	Offset
Short	0.000	99.861		0.000	99.853	Ohm-m	1.000	0.000
Long	0.000	102.069		102.055	102.055	Ohm-m	1.000	0.000
IEE	129.370	6528.851	counts	0.142	7.145	A		
VSN	142.833	7325.000	counts	2.724	139.715	V		
VLN	114.778	1871.738	counts	2.189	35.701	V		

After Survey Verification compared to Before Survey Calibration

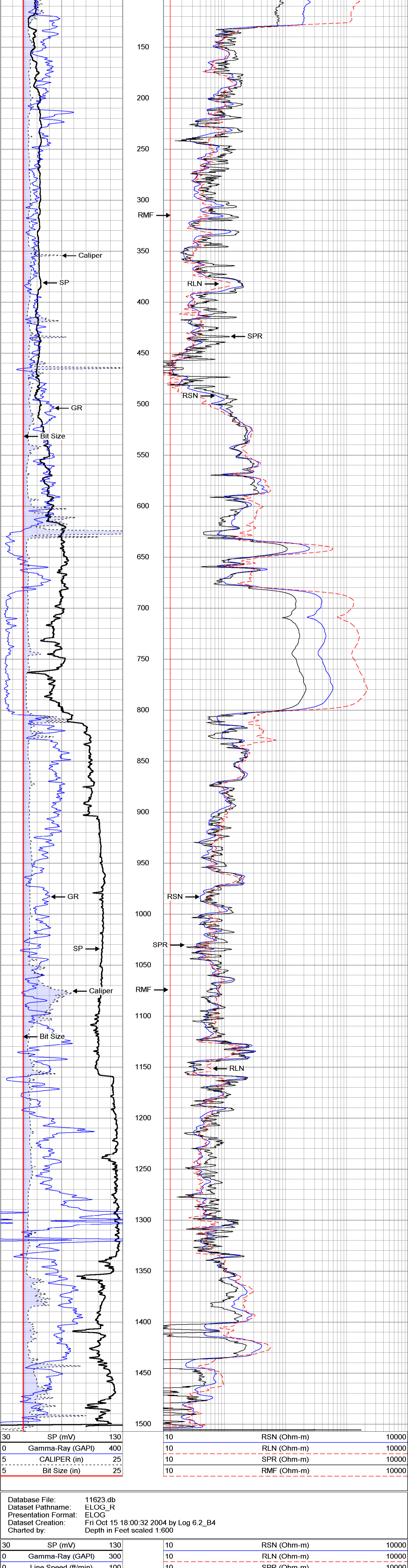
	Zero			Cal			
	Before	After		Before	After		
Short	46.444	0.000	Ohm-m	100.411	99.853	Ohm-m	
Long	331.945	0.000	Ohm-m	103.264	102.055	Ohm-m	

Gamma Ray Calibration Report

Serial Number: D1
Tool Model: ELOG
Performed: Mon Jan 26 16:20:05 2004
Calibrator Value: 162 GAPI
Background Reading: 172.547 cps
Calibrator Reading: 717.938 cps
Sensitivity: 0.297034 GAPI/cps

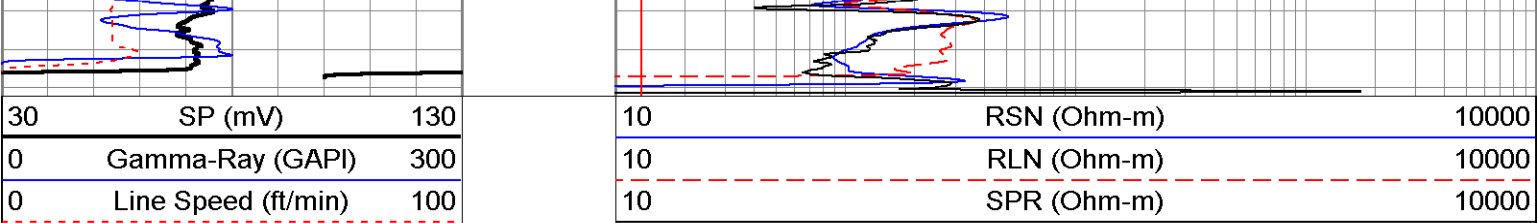
Database File: 11623.db
Dataset Pathname: ELOG1
Presentation Format: ELOG
Dataset Creation: Fri Oct 15 17:06:00 2004 by Log 6.2_B4
Charted by: Depth in Feet scaled 1:600

30	SP (mV)	130	10	RSN (Ohm-m)	10000
0	Gamma-Ray (GAPI)	400	10	RLN (Ohm-m)	10000
5	CALIPER (in)	25	10	SPR (Ohm-m)	10000
5	Bit Size (in)	25	10	RMF (Ohm-m)	10000



Database File: 11623.db
Dataset Pathname: ELOG_R
Presentation Format: ELOG
Dataset Creation: Fri Oct 15 18:00:32 2004 by Log 6.2_B4
Charted by: Depth in Feet scaled 1:600

30	SP (mV)	130	10	RSN (Ohm-m)	10000
0	Gamma-Ray (GAPI)	300	10	RLN (Ohm-m)	10000
0	Line Speed (ft/min)	100	10	SPR (Ohm-m)	10000
0			10	RMF (Ohm-m)	10000



30	SP (mV)	130	10	RSN (Ohm-m)	10000
0	Gamma-Ray (GAPI)	300	10	RLN (Ohm-m)	10000
0	Line Speed (ft/min)	100	10	SPR (Ohm-m)	10000
0			10	RMF (Ohm-m)	10000